



*Molto moderato*

Handwritten musical notation on a single staff, starting with a treble clef and a key signature of one sharp (F#). The notation includes a whole note chord (G, B, D) followed by a series of eighth notes and quarter notes. A circled number '1' is written above the first measure, and a circled number '2' is written above the second measure. The tempo marking 'Molto moderato' is written above the staff.

Handwritten musical notation on a single staff, starting with a treble clef and a key signature of one sharp (F#). The notation includes a whole note chord (G, B, D) followed by a series of eighth notes and quarter notes. A circled number '3' is written above the first measure, and a circled number '4' is written above the second measure. The tempo marking 'Moderato assai' is written above the staff.

Handwritten musical notation on a single staff, starting with a treble clef and a key signature of one sharp (F#). The notation includes a whole note chord (G, B, D) followed by a series of eighth notes and quarter notes. A circled number '5' is written above the first measure, and a circled number '6' is written above the second measure. The tempo marking 'Moderato assai' is written above the staff.

Handwritten musical notation on a single staff, starting with a treble clef and a key signature of one sharp (F#). The notation includes a whole note chord (G, B, D) followed by a series of eighth notes and quarter notes. A circled number '7' is written above the first measure, and a circled number '8' is written above the second measure. The tempo marking 'Moderato assai' is written above the staff.

Handwritten musical notation on a single staff, starting with a treble clef and a key signature of one sharp (F#). The notation includes a whole note chord (G, B, D) followed by a series of eighth notes and quarter notes. A circled number '9' is written above the first measure, and a circled number '10' is written above the second measure. The tempo marking 'Moderato assai' is written above the staff.

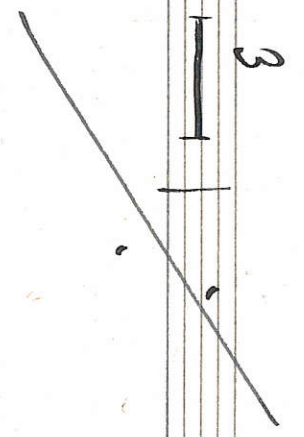
Handwritten musical notation on a single staff, starting with a treble clef and a key signature of one sharp (F#). The notation includes a whole note chord (G, B, D) followed by a series of eighth notes and quarter notes. A circled number '11' is written above the first measure, and a circled number '12' is written above the second measure. The tempo marking 'Moderato assai' is written above the staff.

Handwritten musical notation on a single staff, starting with a treble clef and a key signature of one sharp (F#). The notation includes a whole note chord (G, B, D) followed by a series of eighth notes and quarter notes. A circled number '13' is written above the first measure, and a circled number '14' is written above the second measure. The tempo marking 'Moderato assai' is written above the staff.

Handwritten musical notation on a single staff, starting with a treble clef and a key signature of one sharp (F#). The notation includes a whole note chord (G, B, D) followed by a series of eighth notes and quarter notes. A circled number '15' is written above the first measure, and a circled number '16' is written above the second measure. The tempo marking 'Moderato assai' is written above the staff.

Handwritten musical notation on a single staff, starting with a treble clef and a key signature of one sharp (F#). The notation includes a whole note chord (G, B, D) followed by a series of eighth notes and quarter notes. A circled number '17' is written above the first measure, and a circled number '18' is written above the second measure. The tempo marking 'Moderato assai' is written above the staff.

Handwritten musical notation on a single staff, starting with a treble clef and a key signature of one sharp (F#). The notation includes a whole note chord (G, B, D) followed by a series of eighth notes and quarter notes. A circled number '19' is written above the first measure, and a circled number '20' is written above the second measure. The tempo marking 'Moderato assai' is written above the staff.





Musical notation on a single staff, starting with a treble clef and a key signature of one sharp (F#). The notation includes quarter notes, eighth notes, and a half note, with some notes beamed together. There are three vertical lines above the staff at the beginning and end.

Musical notation on a single staff, starting with a treble clef and a key signature of one sharp (F#). It features a triplet of eighth notes, followed by quarter notes and eighth notes. A circled measure number '31' is present. A long horizontal line with the number '36' below it spans several measures. A circled measure number '32' is also present. The staff ends with a circled measure number '33' and a triplet of eighth notes.

Musical notation on a single staff, starting with a treble clef and a key signature of one sharp (F#). It consists of a series of quarter notes, with some measures containing a double bar line. A circled measure number '34' is present. The staff ends with a circled measure number '35' and a triplet of eighth notes.

Musical notation on a single staff, starting with a treble clef and a key signature of one sharp (F#). It features a series of quarter notes, with some measures containing a double bar line. A circled measure number '34' is present. The staff ends with a circled measure number '35' and a triplet of eighth notes.

Musical notation on a single staff, starting with a treble clef and a key signature of one sharp (F#). It features a series of quarter notes, with some measures containing a double bar line. A circled measure number '35' is present. The staff ends with a circled measure number '36' and a triplet of eighth notes.

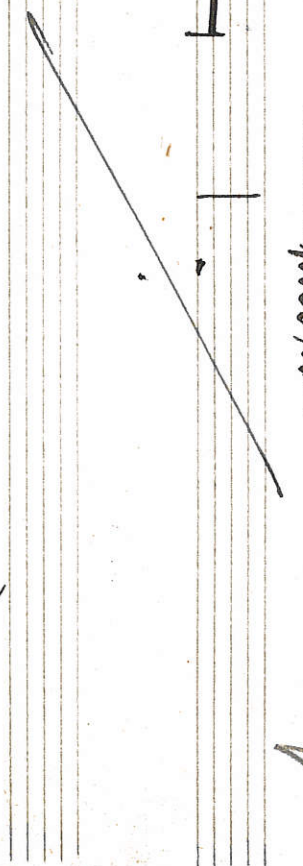
Musical notation on a single staff, starting with a treble clef and a key signature of one sharp (F#). It features a series of quarter notes, with some measures containing a double bar line. A circled measure number '36' is present. The staff ends with a circled measure number '37' and a triplet of eighth notes.

Musical notation on a single staff, starting with a treble clef and a key signature of one sharp (F#). It features a series of quarter notes, with some measures containing a double bar line. A circled measure number '37' is present. The staff ends with a circled measure number '38' and a triplet of eighth notes.

Musical notation on a single staff, starting with a treble clef and a key signature of one sharp (F#). It features a series of quarter notes, with some measures containing a double bar line. A circled measure number '38' is present. The staff ends with a circled measure number '39' and a triplet of eighth notes.

Musical notation on a single staff, starting with a treble clef and a key signature of one sharp (F#). It features a series of quarter notes, with some measures containing a double bar line. A circled measure number '39' is present. The staff ends with a circled measure number '40' and a triplet of eighth notes.

Musical notation on a single staff, starting with a treble clef and a key signature of one sharp (F#). It features a series of quarter notes, with some measures containing a double bar line. A circled measure number '40' is present. The staff ends with a circled measure number '41' and a triplet of eighth notes.



Handwritten musical notation on a single staff. It begins with a treble clef, a 6/8 time signature, and a bar line. This is followed by a 4/4 time signature and another bar line. The piece then returns to a 6/8 time signature. The notation includes a series of eighth and sixteenth notes, some with accidentals (sharps and naturals). The word "Solo" is written above the staff towards the end of the piece.

Handwritten musical notation on a single staff. It starts with a treble clef and a key signature of one sharp (F#). The notation consists of a sequence of eighth and sixteenth notes, some with accidentals. A circled measure number "39" is written above the first measure. The piece concludes with a double bar line.

Handwritten musical notation on a single staff. It begins with a treble clef and a 4/4 time signature. The notation includes a series of eighth and sixteenth notes, some with accidentals. A circled measure number "40" is written above the first measure. The piece concludes with a double bar line.

Handwritten musical notation on a single staff. It starts with a treble clef and a 4/4 time signature. The notation includes a series of eighth and sixteenth notes, some with accidentals. The word "fppp" is written below the staff. The piece concludes with a double bar line.

Five empty musical staves, each consisting of five horizontal lines, arranged vertically on the page.